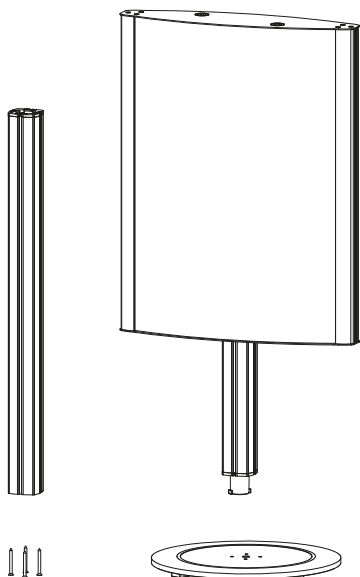
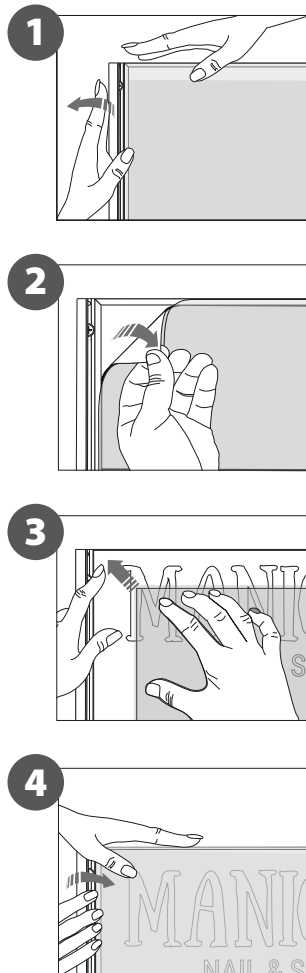


1. GRAPHIC + ANTIREFLECTION PROTECTOR **PLACEMENT**
**CONTENT**

Open and check the content of the boxes and take out all the pieces carefully.

Leinster display is built from sturdy easy-to-use snap aluminum frame. Mount the pole with the round base first. For setting-up LED frame, you must place its graphics (supplied separately) to the Click Frame following the next steps. After this, the frame post is fitted to the base post by means of the hooking system.

**GRAPHIC ATTACHMENT BY CLICK FRAME**

For those cases in which the graphic is **supplied by the client**, we recommend making use of the materials listed in the following **QR code** (scan for downloading Excel file). Please contact us or visit [www.cashdisplay.com](http://www.cashdisplay.com) for more information.

2. SET UP FRAME **STRUCTURE**