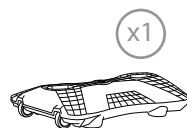
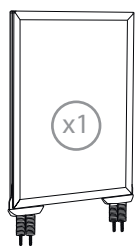
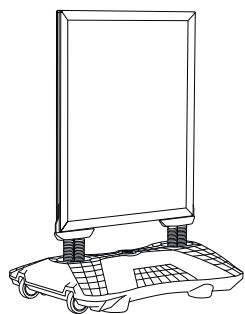


1. GRAPHIC + ANTIREFLECTION PROTECTOR **PLACEMENT**



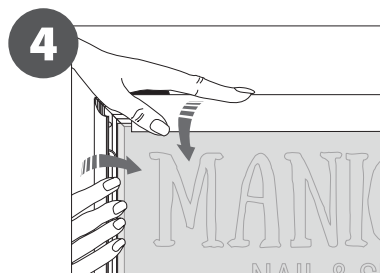
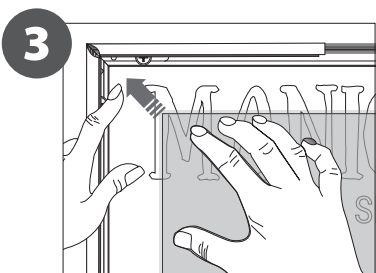
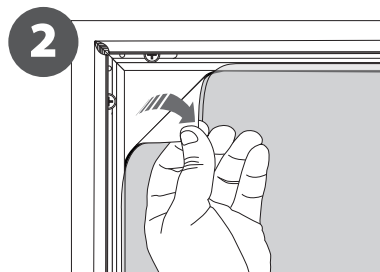
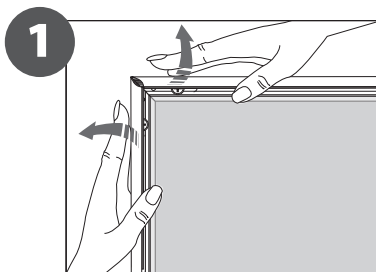
**CONTENT**



Open and check the content of the boxes and take out all the pieces carefully.

For setting-up the Sidewalk Board, you must place its graphics (supplied separately) to the upper Click Frame following the **next steps** describe below.

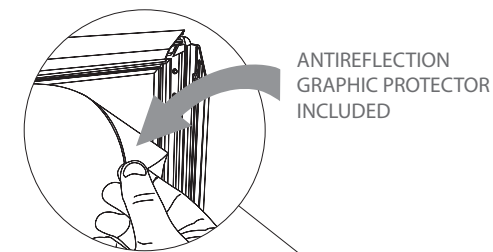
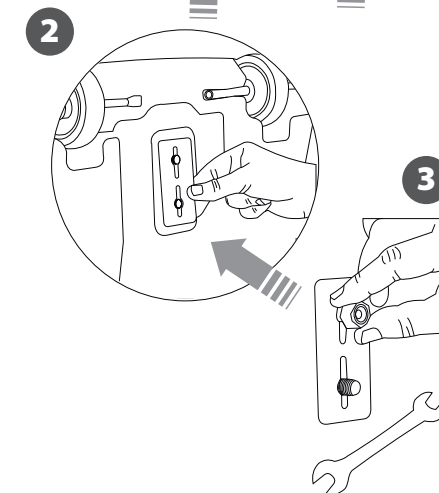
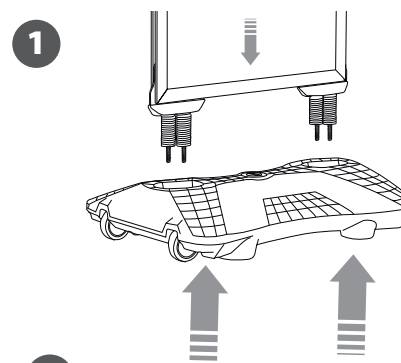
GRAPHIC ATTACHMENT **BY CLICK FRAME**



For those cases in which the graphic is **supplied by the client**, we recommend making use of the materials listed in the following **QR code** (scan for downloading Excel file). Please contact us or visit [www.cashdisplay.com](http://www.cashdisplay.com) for more information.



2. SET UP SIDEWALK BOARD **STRUCTURE**



ANTIREFLECTION  
GRAPHIC PROTECTOR  
INCLUDED

