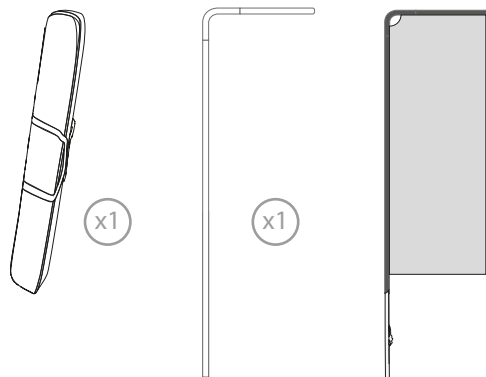


## 1. FLAG BANNER CONTENT AND GRAPHIC PREPARATION



## CONTENT



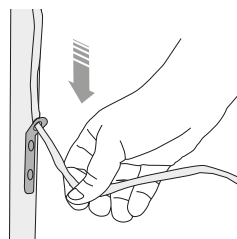
Open the bag, check the content of the bag and take out all the pieces carefully.

This flag banner features a light-weight curved aluminium structure that is assembled in a few seconds by joining the ends marked with pairs of numbers and colours. A padded canvas bag is included for transport.

## GRAPHIC ATTACHMENT BY TENSION FABRIC



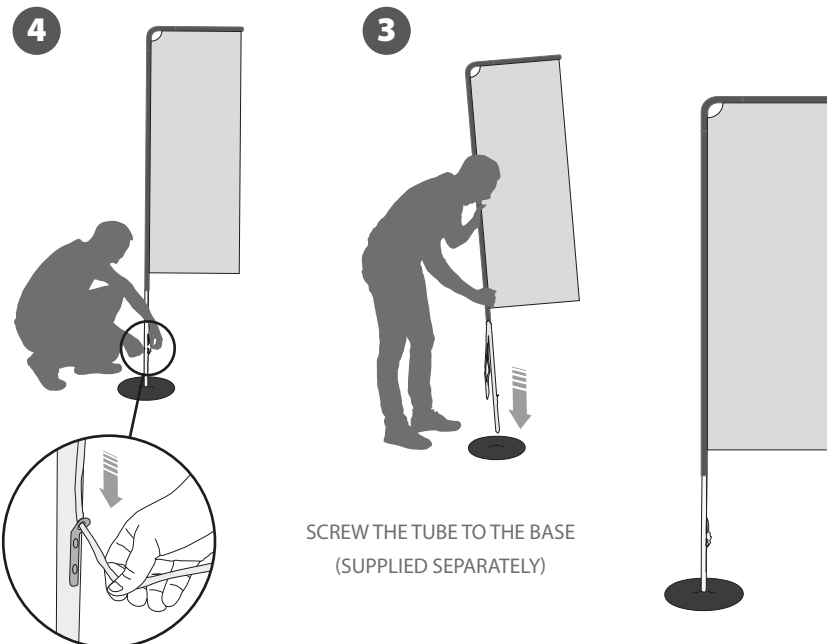
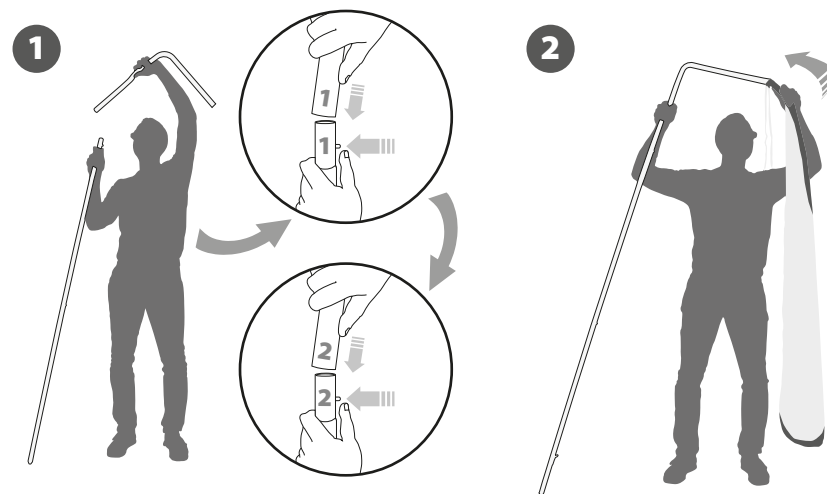
To mount the flag banner, you must first slide the printed fabric (supplied separately) through this tube system and then tighten it at the bottom by tying it to the clip.



For those cases in which the graphic is **supplied by the client**, we recommend making use of the materials listed in the following **QR code** (scan for downloading Excel file). Please contact us or visit **[www.cashdisplay.com](http://www.cashdisplay.com)** for more information.



## 2. SET UP THE POLE AND FIT THE FLAG



SCREW THE TUBE TO THE BASE  
(SUPPLIED SEPARATELY)