

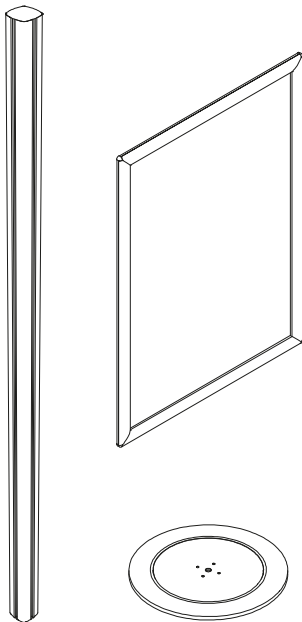
1. GRAPHIC + ANTIREFLECTION PROTECTOR **PLACEMENT**



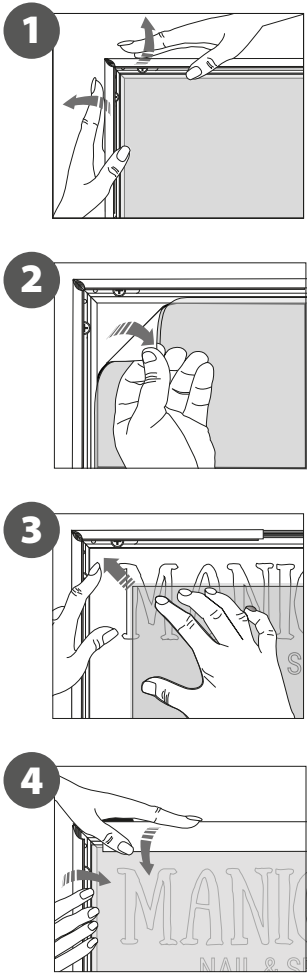
CONTENT

Open and check the content of the boxes and take out all the pieces carefully.

Mount the pole with the round base first. For setting-up frame, you must place its graphics (supplied separately) to the Click Frame following the next steps. Then hang the frame to the post with the skids and screws (are included).



GRAPHIC ATTACHMENT BY CLICK FRAME



For those cases in which the graphic is **supplied by the client**, we recommend making use of the materials listed in the following **QR code** (scan for downloading Excel file). Please contact us or visit www.cashdisplay.com for more information.



2. SET UP FRAME **STRUCTURE**

